



Table of Contents

02	Company History
03	Company Background
04	3217W INTEL NUC CASE
05	3219H INTEL NUC CASE (Haswell)
06	T-1620 Super Mini Series (Fanless)
07	T-34 Series (Fanless Solution)
08	THUNDER T-3420 Fanless (THIN CLIENT)
09	T-33 Series
10	T-3500 Series (Fanless Solution)
11	27 Series
12	27 Series
13	27 Series
14	38 Series
15	56 Series (Wall Mount Solution)
16	5699 (For NVR Solution)
17	6610
18	Smile ITX Chassis 3388 3389
19	557 (Universal/Compact Wall Mount Solution)
20	CASO-25
21	7677 1U Rackmount
22	3230 INTEL NUC CASE
23	3238 New Coming
23	3399 New Coming
24	Power Solution
25	Accessories

Company History

Morex Information Ent., Co., Ltd. Was founded in 1978 as PC Chassis and Power supply manufacturer, with over 20 years of R&D experiences; we earned a good reputation on producing quality products and services. Other than our current product lines, we also served as OEM or ODM for some customers. We have manufacturing facilities in Taiwan and China, with worldwide sales offices and distributors.

Besides standard PC Chassis, We are one of the first manufacturer who introduce the Mini-ITX form factor chassis, and the quiet Power solution, DC to DC converter board. These products will be able to cater for your requirements in the Car Entertainment, Kiosk, Point of Sale (POS), Thin Client, Home Media, Network Application Storage (NAS), and Surveillance (DVR).

Recently, we also offer systems assembly services in Taiwan for meeting our customers demand of freight economy and cost efficiency.

Morex believes your comments will be our progressive power.

Experience

Strong R&D background in for immediate release of NEW trend products to fit market needs.

Cost

Our target quality at the market is for middle to high end range.

Quality

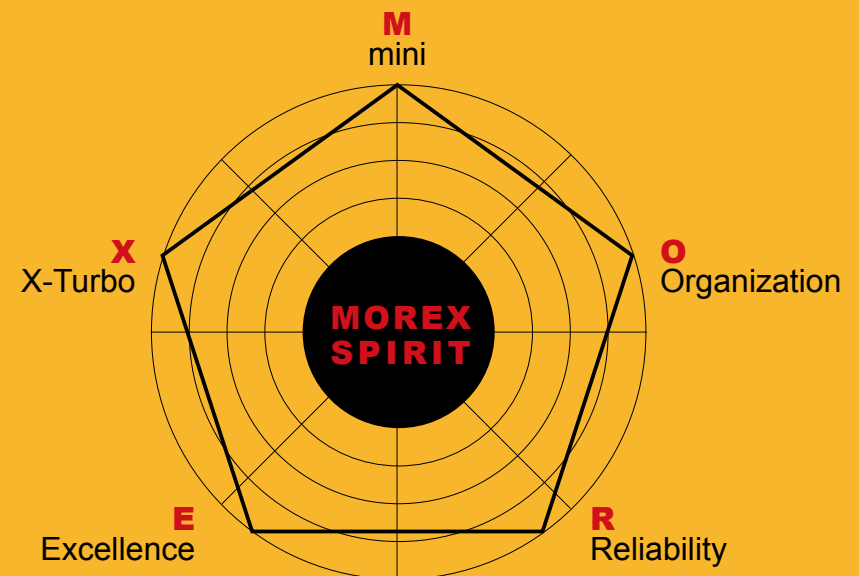
1. From year we established, we immediately involve ourselves to the well known companies like Quanta, HCL, Wyse, Shuttle, and Freeway Japan and hoping for more.
2. These continuous improvement is a sign of their satisfaction to our quality and services.

Service

1. Regional Support
2. Responsiveness / Flexibility
3. Upside Support

Company Background

- Year Established – July, 1978
- Nature of Business – Manufacturer & Exporter
- Capital – USD\$4,300,000.00 (Taiwan Headquarter)
- Factory Size – 20,000m²
- Main Markets – Europe, U.S.A., Asia, Australia
- Main Product – Computer case and Power supply
- Lead Time – 30-45 days after receipt of Purchase Order



3217W



3219H



3217W INTEL NUC CASE



65W for All of Intel NUC Case

SPECIFICATION

Model No.	3217W
Case Dimensions (mm)	120 (L) x 108.2 (W) x 37 (D)
Color	Black
Main Board Size (mm)	UCFF Form Factor (4" *4" *2"); Intel Next Unit of Computing (NUC) -- Intel D847SEK (Intel Celeron Processor 847) /D33217GKE (Intel Core i3-3217U Processor)

Device Support

CD/DVD Device	N/A
HDD Device	Mini PCIE SSD
PCI Slots	N/A

Power Supply

Power	DC Power on M/B 65W A/C Adapter (19V)
-------	--

I/O Port

Front Port	USB *1, Power button
Side Port	USB * 1, Card Reader * 1
Rear Port	USB Hole*2, HDMI Hole *2, LAN Hole *1, WIFI Hole*2

Function

Application	Digital Signage, Kiosk
-------------	------------------------

Optional

Ear Brackets	Incl.
--------------	-------

3219H INTEL NUC CASE (Haswell)



SPECIFICATION

Model No.	3219H
Case Dimensions (mm)	145 (L) x 110 (W) x 47 (H); 0.8L
Color	Blue
Main Board Size (mm)	Compatibility (Haswell) Intel D34010WYB (i3) Intel D54250WYB (i5)
HDD Device:	2.5" HDD/SSD * 1
Front I/O	USB *2, Headphone/Mic Jack *1, Consumer infrared sensor
Side I/O	USB *1, Card Reader *1, WIFI Hole*2
Rear I/O	USB *2, LAN*1, 19V, 65W DC Power connector*1, Mini Display *1, One mini HDMI *1, COM *2
Power:	65W A/C Adapter (19V)
Application	Digital Signage, Kiosk, POS, Vending machine, Surveillance

T-1620



T-1620

Super Mini Series
(Fanless)



VESA Bracket
for T-1620

Specification

Model No.	T-1620 (Super Mini)
Case Dimensions (mm)	38mm (H) x 178mm (W) x 178mm (D)
Material	Alloy Metal
Suitable M/B	Design only for Intel DN2800MT M/B
Main Board Size (mm)	Mini-ITX Form Factor (170x170)
Power	DC Power on M/B 60W AC Adapter (12V/5A)
Front Port	N/A

Device Support

CD/DVD Device	N/A
HDD Device	2.5"
FDD Device	N/A
PCI Slots	N/A
System Fan	Fanless

Application

Functional	Thin Client, Transportation, Networking All-in-one
------------	---



Appurtenance

- VESA Bracket
- Vertical Stand
- Screws Bag
- 60W AC Adapter
- Rubber Foot
- HDD Mylar
- Power Cable
(Big 4P +SATA Connector)
- Power Cord

Appurtenance

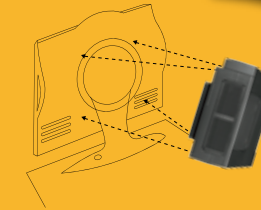
- 60W AC Adapter
- 80W AC Adapter (Optional)
- Power Cord
- Screw Bag
- Stand
- VESA Bracket
- Bracket for Install 2.5" DVD Device

T-3410

T-3460



T-34 Series (Fanless Solution)



VESA Bracket
for T-34XX

Specification

Model No.	T-3410	T-3460
Case Dimensions (mm)	233 (H) x 64 (W) x 207.5 (D)	233 (H) x 97 (W) x 207.5 (D)
Material	Full Plastic with EMI approval	Full Plastic with EMI approval
Main Board Size (mm)	Mini-ITX Form Factor (170 x 170)	Mini-ITX Form Factor (170 x 170)
Power	60W / 80W D2D Type Power	60W / 80W D2D Type Power
Front Port	USB x2, Audio x1, Mic x1	USB x2, Audio x1, Mic x1

Device Support

CD/DVD Device	N/A	2.5"
HDD Device	2.5"	2.5"
FDD Device	N/A	N/A
PCI Slots	N/A	1
System Fan	Fanless	Fanless

Function

Application	Thin Client	Thin Client / Server
-------------	-------------	----------------------

Notes

①	VESA Bracket
② + ③	Bracket for Install 2.5" DVD Device



Internal Structure

T-3420



THUNDER T-3420 Fanless (THIN CLIENT)



Specification

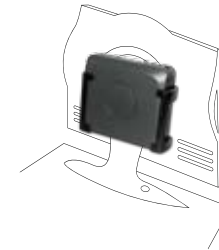
Model No.	Thunder (T-3420)
Case Dimensions (mm)	233 (H) x 64 (W) x 207.5 (D)
Material	Full Plastic with EMI approval
Main Board Size (mm)	Mini ITX Form Factor (170 x 170)
Front Port	USB x 2, Audio x 1, Mic x 1
Power	60W / 80W D2D Type Power
HDD Device	2.5"
System Fan	Fanless
Application	Thin Client
CD/DVD Device	N/A
HDD Device	2.5"
PCI Slots	N/A

Notes

①	VESA Bracket
② + ③	Bracket for Install 2.5" DVD Device

Appurtenance

- 60W AC Adapter
- 80W AC Adapter (Optional)
- Power Cord
- Screw Bag
- Stand
- Malyer
- ATX Cable
(Support Intel 4PIN Cable)



VESA Bracket (Optional)
for T-3310, T-3320

T-3320

T-3310



T-33 Series (Fanless Solution)



T3310 Internal Structure



Rear Side Panel

Specification

Model No.	T-3310	T-3320
Case Dimensions (mm)	230 (H) x 89.94 (W) x 205 (D)	230 (H) x 89.94 (W) x 205 (D)
Color	Black	Black
Material	Full Plastic with EMI approval	Full Plastic with EMI approval
Main Board Size (mm)	Mini-ITX Form Factor (170 x 170)	Mini-ITX Form Factor (170 x 170)
Power	60W/80W D2D Type Power	60W/80W D2D Type Power
Front Port	USB x 2, Audio x 1, Mic x 1	USB x 2, Audio x 1, Mic x 1

Device Support

CD/DVD Device	N/A	N/A
HDD Device	2.5"	2.5"
FDD Device	N/A	N/A
PCI Slots	N/A	N/A
System Fan	-	-

Function

Application	Thin Client, Terminal Service Projects	Thin Client, Terminal Service Projects
-------------	--	--



Appurtenance

- Slim CD Converter (Optional)
- 1 to 1 Riser Card or 1 to 2 Riser Card (Optional)
- 60W AC Adapter
- 80W AC Adapter (Optional)
- Power Cord
- Screw Bag
- Stand



2755



2757



2756

T-3500

(Fanless Solution)



VESA Bracket (Optional)
for T-3500



Internal Structure



Rear Side Panel

Specification

Model No.	T-3500	
Case Dimensions (mm)	92 (H) X 200 (W) X 235 (D)	
Color	Black	
Main Board Size (mm)	Mini ITX Form Factor (170 x 170)	
Front Port	USB X 2, Audio, MIC	

Device Support

CD/DVD Device	Slim Type	
HDD Device	2.5" Type	
PCI Slots	N/A	

Internal Power Supply (DC-DC Converter)

Watts	80W (12V) 150W (19V)	
Application	VIA C3 or C7 & Pentium - M System	Pentium - 4 System

External Power Supply (AC Adapter)

Watts	60W & 80W (12V)	150W (19V)
Application	VIA C3 or C7 & Pentium - M System	Pentium - 4 System

Function

Application	Home Media, Thin Client
-------------	-------------------------

Appurtenance

- 60W AC Adapter
- 150W AC Adapter (P4 Version)
- Screw Bag
- ATX Cable (Support Intel 4PIN Cable)
- 80W AC Adapter (Optional)
- Power Cord
- Stand

27 Series



Rear Side Panel

Internal Structure

Specification

Model No.	2755	2756	2757
Case Dimensions (mm)	63.5 (H) X 295 (W) X 265 (D)	63.5 (H) X 295 (W) X 265 (D)	63.5 (H) X 295 (W) X 265 (D)
Color	Black	Black	Black
Main Board Size (mm)	Mini ITX Form Factor(170x170)	Mini ITX Form Factor (170x170)	Mini ITX Form Factor (170x170)
Front Port	USBX2	USBX2	N/A

Device Support

CD/DVD Device	Slim Type	N/A	N/A
HDD Device	3.5" Type	3.5" Type	3.5" Type
PCI Slots	2	2	2

Internal Power Supply (DC-DC Converter)

Watts	80W (12V)	80W (12V)	80W (12V)
Application	VIA C3 or C7 & Pentium-M System	VIA C3 or C7 & Pentium-M System	VIA C3 or C7 & Pentium-M System

External Power Supply (AC Adapter)

Watts	60W & 80W (12V)	60W & 80W (12V)	60W & 80W (12V)
Application	VIA C3 or C7 & Pentium-M System	VIA C3 or C7 & Pentium-M System	VIA C3 or C7 & Pentium-M System

Function

Application	Set Top Box, Kiosk , Fire Wall	Set Top Box, Kiosk , Fire Wall	Set Top Box, Kiosk , Fire Wall
-------------	--------------------------------	--------------------------------	--------------------------------



27 Series



Specification

Model No.	2733	2766	2777
Case Dimensions(mm)	63.5 (H) X 295 (W) X 300 (D)	63.5 (H) X 295 (W) X 288 (D)	63.5 (H) X 295 (W) X 288 (D)
Color	Black	Black	Black
Main Board Size(mm)	Mini ITX Form Factor (170x170)	Mini ITX Form Factor (170x170)	Mini ITX Form Factor (170x170)
Front Port	USB X 2	USBX2, Audio X1, MicX1, 1394X1	N/A

Device Support

CD/DVD Device	Slim Type	Slim Type	Slim Type
HDD Device	3.5" Type	3.5" Type	3.5" Type
PCI Slots	2	2	2

Internal Power Supply (DC-DC Converter)

Watts	80W (12V)	150W (19V)	80W (12V)	150W(19V)	80W(12V)	150W(19V)
Application	VIA C3& Pentium-M System	Pentium-4 System	VIA C3 or C7& Pentium-M System	Pentium-4 System	VIA C3 or C7 & Pentium-M System	Pentium-4 System

External Power Supply (AC Adapter)

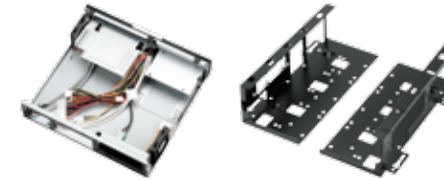
Watts	60W&80W (12V)	150W(19V)	60W&80W (12V)	150W(19V)	60W&80W (12V)	150W (19V)
Application	VIA C3& Pentium-M System	Pentium-4 System	VIA C3 or C7 Pentium-M System	Pentium-4 System	VIA C3 or C7 Pentium-M System	Pentium-4 System

Function

Application	Home Media Center, Set Top Box, Kiosk, Server	POS, Set Top Box, Kiosk	Home Media Center, Set Top Box, Kiosk
-------------	---	-------------------------	---------------------------------------

Appurtenance

- 1 to 1 Riser Card or 1 to 2 Riser Card (Option)
- 60W AC Adapter
- 150W AC Adapter (P4 version)
- Screw Bag
- 80W AC Adapter (Option)
- Power Cord
- Stand



Internal Structure (P4) VESA Bracket



Rear Side Panel (C3)



Rear Side Panel for P4 Version



Internal Structure (C3) Top Cover for P4 Version

27 Series



VESA Bracket (Optional)

Specification

Model No.	2799	2700
Case Dimensions(mm)	63.5 (H) X 295 (W) X 288 (D)	63.5 (H) X 295 (W) X 288 (D)
Color	Black	Black
Main Board Size(mm)	Mini ITX Form Factor (170x170)	Mini ITX Form Factor (170x170)
Front Port	USB X 2, Audio X 1, Mic X 1, 1394 X 1	USB X 2, Audio X 1, Mic X 1, 1394 X 1, IR Hole

Device Support

CD/DVD Device	Slim Type	Slim Type	
HDD Device	3.5" Type	3.5" Type	
PCI Slots	2	2	

Internal Power Supply (DC-DC Converter)

Watts	80W (12V)	150W (19V)	80W (12V)	150W (19V)
Application	VIA C3 or C7 & Pentium-M System	Pentium-4 System	VIA C3 or C7 & Pentium-M System	Pentium-4 System

External Power Supply (AC Adapter)

Watts	60W&80W (12V)	150W (19V)	60W&80W (12V)	150W (19V)
Application	VIA C3 or C7 & Pentium- M System	entium-4 System	VIA C3 or C7 & Pentium-M System	entium-4 System

Function

Application	Home Media Center, Set Top Box, Kiosk	Home Media Center, Set Top Box, Kiosk
-------------	---------------------------------------	---------------------------------------

Appurtenance

- 60W AC Adapter
- 80W AC Adapter (Optional)
- 150W AC Adapter (P4Version)
- Power Cord
- Screw Bag
- Stand
- ATX Cable
- (Support Intel 4PIN Cable)
- Slim CD Converter (Optional)



Internal Structure

3877

38 Series

Specification

Model No.	3822	3833	3877
Case Dimensions (mm)	65.2 (H) X 210 (W) X 295 (D)	65 (H) X 210 (W) X 295 (D)	65 (H) X 210 (W) X 275 (D)
Color	Black	Black	Black
Main Board Size (mm)	Mini ITX Form Factor (170 x 170)	Mini ITX Form Factor (170 x 170)	Mini ITX Form Factor (170 x 170)
Front Port	USB X 2	USB X 2	USB X 2

Device Support

CD/DVD Device	Slim Type	Slim Type	Slim Type
HDD Device	2.5" Type	2.5" Type	2.5" Type
PCI Slots	N/A	N/A	N/A

Internal Power Supply (DC-DC Converter)

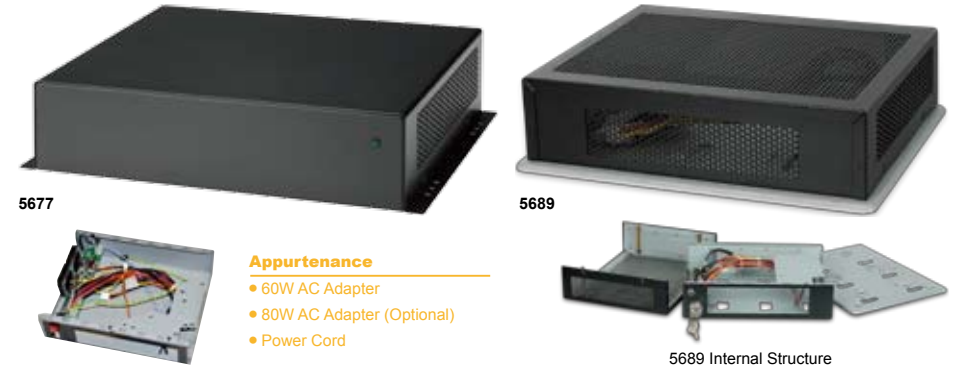
Watts	80W (12V) 150W (19V)	80W (12V) 150W (19V)	80W (12V) 150W (19V)
Application	VIA C3 or C7 & Pentium- M System Pentium- 4 System	VIA C3 or C7 & Pentium- M System Pentium- 4 System	VIA C3 or C7 & Pentium- M System Pentium- 4 System

External Power Supply (AC Adapter)

Watts	60W&80W (12V) 150(19V)	60W&80W (12V) 150W (19V)	60W&80W (12V) 150W (19V)
Application	VIA C3 or C7 & Pentium- M System Pentium- 4 System	VIA C3 or C7 & Pentium- M System Pentium- 4 System	VIA C3 or C7 & Pentium- M System Pentium- 4 System

Function

Application	Set Top Box, Thin Client, Car Entertainment, Smart Mini PC	Set Top Box, Thin Client, Car Entertainment, Smart Mini PC	Set Top Box, Thin Client, Car Entertainment, Smart Mini PC
-------------	--	--	--



5677

5689

Appurtenance

- 60W AC Adapter
- 80W AC Adapter (Optional)
- Power Cord

5689 Internal Structure

56 Series

(Wall Mount Solution)

Specification

Model No.	5677	5689
Case Dimensions (mm)	58.5 (H)X 259.5 (W) X186 (D)	66 (H)X 251 (W) X 200 (D)
Color	Black	Black
Main Board Size (mm)	Mini ITX Form Factor (170x170)	Mini ITX Form Factor (170x170)
Front Port	N/A	N/A

Device Support

CD/DVD Device	N/A	N/A
HDD Device	2.5	2.5
Feature	-	Key lock , Fanless
PCI Slots	N/A	N/A

Internal Power Supply (DC-DC Converter)

Watts	80W (12V)	80W (12V)
Application	VIA C3 or C7 & Pentium-M System	VIA C3 or C7 & Pentium-M System

External Power Supply (AC Adapter)

Watts	60W&80W (12V)	60W&80W (12V)
Application	VIA C3 or C7 & Pentium-M System	VIA C3 or C7 & Pentium-M System

Function

Application	POS, Kiosk, Industrial Monitoring Center, Digital Signage
-------------	---

Appurtenance

- VESA Mount and Wall Mount bracket.
- 60W AC Adapter
- 80W AC Adapter(Optional)
- Power Cord
- Screw Bag
- Key X 2

5699



5699

(For NVR Solution)

5699 NVR PC

Size (mm)	58.5 (H) x 237 (W) x 192 (D)
Suitable Main Board	Thin ITX M/B + i3 or i5 CPU + CPU Cooler
Memory	2G or 4GB
HDD	1* 500G or 1TB 2.5" or 3.5" SATA3
Supports	Intel® HD Graphics with Built-in Visuals 2 front 2 rear, 2 x SATA2 connectors, 1 x eSATA connector
	PCIE x1 Gigabit LAN 10/100/1000 Mb/s
Multi VGA Output options	HDMI, DVI-I and LVDS
I/O	COM *2, Antenna Hole * 1
Power	90W or 120W AC Adapter
Applications	POS, KIOSK, AUTOMATION, NVR
Optional	Camera, LAN Cables, Hubs, SATADOM, O/S



Appurtenance

- 90W AC Adapter
- 120W AC Adapter (Optional)
- Power Cord

Appurtenance

- 200W PS2 ATX Power
- Power Cord (Optional)
- Fan With Bracket (Optional)
- 1 to 1 Riser Card For Standard PCI Card (Optional)
- Assembly Guide

6610



6610



Rear Side Panel

Specification

Model No.	6610
Case Dimensions (mm)	258mm (H) X 194mm (W) X 190mm (D)
Color	Black
Main Board Size (mm)	Mini ITX Form Factor (170mm X 170mm)
Front Port	USB X 2, Audio X 1, Mic X 1

Device Support

Hard Drive	Up to 3 X 3.5" HDD (Depend On Systems Configuration)
External 5.25" Drive Base	1
External 3.5" Drive Base	1
PCI Slots	1xLow profile (No Riser Card Needed) , 1x Full Height (PCI Riser Card Needed,Optional)
6010 FAN	Optional

Power Supply(Optional)

Watts	PS3 Or PS2 ATX Power
Power Case Dimension	150mm X 86mm X 100mm

3389



3388



Appurtenance

- 60W A/C Adapter
- 80W A/C Adapter (Optional)
- 90W A/C Adapter (19V, 4.74A)
- System Fan 40 x 40 (Optional)
- System Fan 60 x 60 (Optional)
- Ear Bracket x 2
- Rubber Foot
- Screws Bag
- Power Cord

557



Smile ITX Chassis 3388 3389

Specification

Model No.	3388	3389
Case Dimensions (4.7L)	73mm(H) *320mm(W) *202mm(D)	
Color	Black	
Main Board Size	Mini ITX Form Factor (170mm*170mm)	
Front Port	USBx2, Audio x1, Mic x1	
Rear Port	COM PORTx3, ANT HOLE, CF CARD SLOT	

Device Support

CD/DVD Device	Slim ODD Type (If use HDD2,can not use Slim ODD)
2.5"HDD Device	HDD1

Power Supply

Watts	150W AC 115V / AC 230V Input
Application	Intel CORE 2 DUO & ATOM System, VIA C7&C3 System

Appurtenance

	POWER CORD
Optional	6010FAN, CF-CARD ADAPTER, COM PORT CABLE, HDD2-BRACKET

Function

Application	Multimedia PC or Any number of Applications
-------------	---



Internal Structure



back panel

557 (Universal/Compact Wall Mount Solution)



Specification

Model No.	557
Case Dimensions(mm)	62 (H) X 190 (W) X 196 (D)
Color	Black
Main Board Size(mm)	170 (W) X 170 (D) Also suitable for Intel DH61AG MB Size (mm)
Front Port	USB X 2

Device Support

CD/DVD Device	N/A
HDD Device	2.5" Type, Optional X1
PCI Slots	N/A
VESA Holes	100 X 100

Power Supply

DC to DC Converter (DC Board)	80W (12V) Item No.: 557D
DC Power on Board	90W (19V, 4.74A) Item No.: 557P

Function

Application	POS, Kiosk, Digital Signage, MediaBox
-------------	---------------------------------------



60W Adapter



80W Adapter



90W Adapter



120W Adapter

CASO-25



CASO-25



60W Adapter for CASO25

SPECIFICATION

Model No.	CASO-25
Case Dimensions (mm)	212.3 (L) * 210.6 (W) * 62.8(D); 2.8L
Color	Black
Main Board Size (mm)	170 (W) * 170 (D)
Compatibility	

Device Support

CD/DVD Device	N/A
HDD Device	2.5" HDD * 1 or 2
PCI Slots	N/A

Power Supply

Power	DC to DC Converter 60W A/C or 80W A/C Adapter (12V)
-------	--

I/O Port

Side Port	USB *2, Audio * 1, Mic *1
Rear Port	COM * 2, Antenna Hole * 2

Function

Application	Thin Client, POS
-------------	------------------

Optional

Ear Brackets	Optional
--------------	----------

Compatible M/B List

• Asus C8HM/0-1 HDMI	Y	• VIA CN	Y
• ECS NM701	Y	• China M-D36CLB2	Y
• ECS NM/0-12	Y	• Intel D2700DC	Y
• ECS CDC-I D2550	Y	• Intel D2500CC	Y
• VIA PC2000E+	Y	• Intel D2500HN	Y

7677 1U



7677 1U Rackmount

Appurtenance

- 1 to 2 Riser Card (Optional)
- Power Cord
- Slim CD Converter (Optional)
- 4cm Two Ball Bearing Fan with Fan Bracket (Optional)

Specification

Model No.	7677
Case Dimensions (mm)	45 (H) X 484 (W) X 400 (D)
Color	Black
Main Board Size (mm)	Mini ITX Form Factor (170 x 170)

Device Support

CD/DVD Device	Slim Type
HDD Device	3.5" HDD X 2
PCI Slots	2
I/O Shield	Customized I/O Shield or Laser Cut I/O Shield by VIA EPIA EK_D525MWV, D2500CCE (Standard package)

Power Supply

Watts	200W
-------	------



Internal Structure and Rear Side Panel

3230



3238



3399



3230 Series

Specification

Model No.	3230
Case Dimensions (mm)	47(H) x 110(D) x 170(W)
Color	Black
Main Board Size (mm)	Compatibility Intel D53427RKE (Intel Core i5-3427U Processor)

Device Support

CD/DVD Device	NO
HDD Device	2.5" HDD *1
PCI Slots	NO

Power Supply

Power	65W AC Adapter (19V)
Front I/O	USB *1
Side I/O	USB *4
Rear I/O	USB *2, LAN *1, 19V 65W DC Power connector *1, HDMI *1, Dual Mini Display *1, Lock *1

Function

Functional	Think client, Digital Signage, POS, Kiosk
------------	---

Optional

VESA Wall Mount Bracket (Optional)	
------------------------------------	--



3238 Series

Specification

Model No.	3238
Case Dimensions (mm)	200.5(H) x 120(D) x 60(W)
Color	Black
Main Board Size (mm)	Compatibility Intel DE3815TYBE (Intel Atom processor E3815)

Device Support

CD/DVD Device	NO
HDD Device	2.5"HDD *1
PCI Slots	NO

Power Supply

Power	DC Power on M/B 65W AC Adapter (19V)
Front I/O	USB *1
Rear I/O	LAN *1, HDMI *1, 19V 65W DC Power connector *1, USB *2, Headphone/Microphone Jack *1

Function

Functional	Multimedia PC or Any number of Application
------------	---

Optional

VESA Bracket	
--------------	--

3399 Series

Specification

Model No.	3399
Case Dimensions(mm)	73(H) x 211.6(D) x 265(W)
Color	Black
Main Board Size(mm)	Mini ITX Form Factor (170mm*170mm)

Device Support

CD/DVD Device	NO
HDD Device	2.5"HDD *1
PCI Slots	NO

Power Supply

Power	150W AC 115V/AC 230V Input
Front I/O	USB *2, Audio *1, Mic *1
Rear I/O	COM *3, ANT *1

Function

Functional	Multimedia PC or Any number of Application
------------	---

Optional

HDD2-BRACKET	
COM PORT CABLE ,ANT	

Power Solution 60W/80W Power Kit

Appurtenance

1. 60W AC Adapter
2. 80W AC Adapter
3. DC Board
4. DC Jack Cable
5. ATX Cable
6. Power Cord



Specification

Model No .	PDB060R	PDB080R
Input DC Voltage Require	11.4 V ~ 12.6 V	11.4 V ~ 12.6 V
DC Board Maximum Output	80.2 W	80.2 W
AC Adapter	60W	80W
Operating Temperature	0~45° C	0~45° C

Maximum Output (W)

Output Voltage (V)	5VSB	+3.3V	+5V	+12V	-12V	5VSB	+3.3V	+5V	+12V	-12V
Output Current (A)	1.5	5	5	2.5	0.1	1.5	5	5	2.5	0.1
Power Output (W)	7.5	16.5	25	30	1.2	7.5	16.5	25	30	1.2

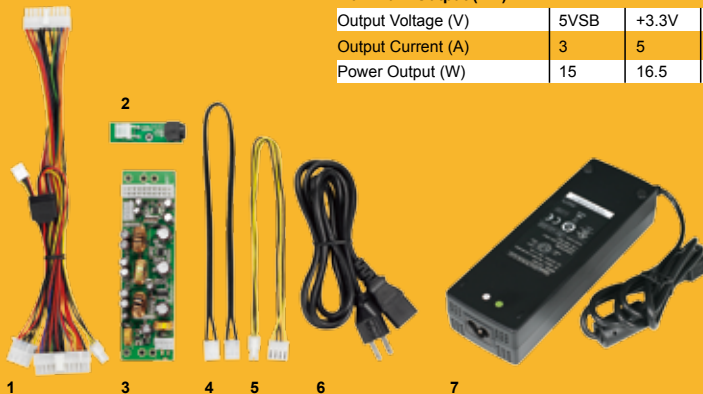
Power Solution 150W Power Kit

Specification

Model No .	PDB150R
Input DC Voltage Require	18.0V ~ 19.9V
DC Board Maximum Output	150W
AC Adapter	150W
Operating	Temperature 0~45° C

Maximum Output (W)

Output Voltage (V)	5VSB	+3.3V	+5V	+12V	-12V
Output Current (A)	3	5	8	8	0.2
Power Output (W)	15	16.5	40	96	2.4



Appurtenance

1. ATX Cable
2. DC Jack PCB
3. DC Board
4. DC Jack Cable
5. Power 4Pin Cable
6. Power Cord
7. 150W AC Adapter